



SAN JOAQUÍN ELEMENTARY PBIS NEWSLETTER

March 2021 | Issue 2 |

MONTHLY MESSAGE

Happy March SJE Family!

As Springtime nears, so does Spring Break, the next round of testing, and so many other things, both wonderful and exhausting.

Please be reminded of the value of self-care this month: take a bath, a long walk, a good cry even!

This month we are also focused on EFFORT as our character trait; and not a moment too soon as effort tends to wane the weeks before Spring Break!



SJE'S PBIS VISION

In keeping with our school's mission, San Joaquin's PBIS vision is to build an inclusive and safe school culture through equitable practices, a restorative lens, and with an emphasis on the social and emotional well being of our students, staff, and families.

We value :

1. Respect within our School Community
2. Positive Attitudes
3. Empathy and Understanding
4. Support to all Members of our Community



PBIS AND TEACHING

Hi teachers,

Check out PBIS WORLD (Click [HERE](#)) for some behavior intervention resources and data tracking tools. We are working together to find resources to help support you with PBIS. Please reach out to Ms. Vellrath or Ms. Gulczynski if you have any questions or would like support.

BE ON THE LOOK OUT



- The PBIS team will be holding an optional 3 session paid PD series on PBIS foundations and applications beginning in March.
- Monthly certificates for students who have Perfect(zero absences) and Good Attendance (1-3 absences and/or tardies combined)

Sample Certificate



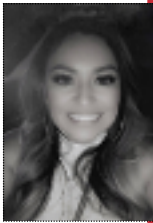
CWA CONNECTS



Dear SJE,

As you know, some of our students are having difficulty participating in Distance Learning or failing to show up for a number of reasons. Please continue to reach out to the families and encourage them to have their child(ren) participate and complete their assignments. Be reminded you can input the names of students you are concerned about into the **Red Flag List** and/or submit a **CARE Team Referral**. The **Attendance Protocol** will be reviewed during our PBIS PD series. **Let's continue to let our students know we want them here!**

Veronica Estrada
Kennedy, Pittman, San Joaquin, Taft, Taylor
(209) 933-7020, ext 2285
VEstrada@stocktonusd.net



COUNSELOR'S CORNER

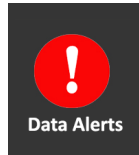


This month's character trait is **Effort**. While this can be a difficult trait to master, it is also one filled with so much value! Please reach out to your counselor if you would like a classroom lesson on effort.

Truancy Rate as of Mid-February:

7.7%

Winter PLUS Survey



Winter's **PLUS** data is in and it is insightful.

PLUS surveys are offered to 4-8th graders, although most of the participants were 7th & 8th graders. PLUS data is taken in the Fall, Winter and End-of-Year.

Here are some takeaways:

- 75% of our polled Middle Schooler's believe there is a teacher at San Joaquin who believes in them. This has held consistent since our Fall survey. Good Job MS! Keep it up!
- In the Fall survey, 28 % of our polled students said "There is a lot of tension at my school between different cultures, races, or ethnicity." This is DOWN to 15% in Winter's data! Good job team!
- Positive responses to "I feel like my voice matters to adults at my school." remains low, although there has been improvement: 65% in the fall; 70% in the spring. How can we improve here?

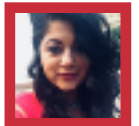
Jaguar Paws

formely known as
"Caught Being Good!"

Yazmin Gutierrez
School Counselor.
K-4th

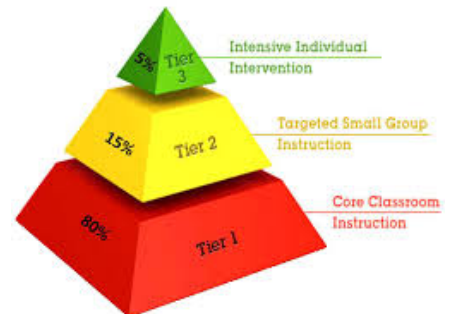


Ana Garza
School Counselor.
5th-8th



OUR PBIS LEADERSHIP TEAM

Ms. April Scott: AP
Mrs. Gutierrez Counselor K-4
Ms. Garza, Counselor 5-8
Vs. Estrada, CWA
Mrs. Gulcynski, Teacher; 1st
Ms. Vellrath, RSP Teacher
CSA and Noon Duty Officers



Trauma Informed Schools

Over the next few months, this section will focus on informing our school on why being Trauma-Informed benefits us all. This month we will focus on Adverse Childhood Experiences.

THE TRUTH ABOUT ACES

WHAT ARE THEY?

ACEs are ADVERSE CHILDHOOD EXPERIENCES

HOW PREVALENT ARE ACES?

The ACE study* revealed the following estimates:

HOUSE

- Neglect: 28%
- Abuse: 28%
- Instability: 28%

NEGLECT

- Emotional: 28%
- Physical: 28%

HOUSEHOLD DYSFUNCTION

- Parental divorce: 28%
- Parental remarriage: 28%
- Parental mental illness: 28%
- Parental substance abuse: 28%
- Parental marital violence: 28%

DIFFICULTY PARTICIPATING

8% (100) vs 10% (100) vs 15% (100) vs 20% (100) vs 25% (100)

Do More Types of ACEs Matter?

ABUSE, NEGLECT, HOUSEHOLD DYSFUNCTION

WHAT IMPACT DO ACES HAVE?

As the number of ACEs increases, so does the risk for negative health outcomes

0 ACEs, 1 ACE, 2 ACEs, 3 ACEs, 4+ ACEs

Physical Health Outcomes

Ischemic Heart Disease, Stroke, COPD, Diabetes, Depression, Lung Disease, Cancer, HIV, Liver Disease

Behavioral Health Outcomes

Alcohol Abuse, Smoking, Suicide, Self-Harm, Mental Illness

Source: www.aceinquiry.org



Dr. Nadine Burke is our California Surgeon General, and the first in her role! Before transitioning to the state level, Dr. Burke held a practice in a tough San Francisco neighborhood, where she quickly discovered that the more trauma her young patients had, the sicker they were. In her book "The Deepest Well," Dr. Burke dives deep into the topic of trauma and health. The above video is a summary of that work and well worth a quick watch!

Learn more by taking your OWN ACES quiz [HERE!](#)

San Joaquin's Tiered Support System

Below You will find a "Menu of Services," our overview of how your school counselor's work with the needs of students. School Counselors provide support in three domains: social/emotional; academic; and college/career.

