



PROJECT LEAD THE WAY

PLTW



Empowering students to thrive in an evolving world



---

## We engage and empower students.

---

Project Lead The Way is a nonprofit organization that provides a transformative learning experience for **K-12 students and teachers** across the U.S. We create an engaging environment and empower students to develop in-demand knowledge and skills necessary to **thrive in an evolving world.**

**We set expectations high.** We inspire students to believe in their abilities, test their limits, and question what's possible.

Through our pathways in computer science, engineering, and biomedical science, K-12 students learn problem-solving strategies, critical and creative thinking, and how to communicate and collaborate. Students apply knowledge from a variety of disciplines as they engage in hands-on activities, projects, and problems reflective of **real-world scenarios and careers.** We are shaping the innovators, creators, and designers of today and tomorrow.



---

# We inspire students to question what's possible.

---

**PLTW Launch** taps into K-5 students' exploratory nature, engages them in learning that feels like play, and encourages them to keep discovering – now and for years to come. Whether designing a car safety belt or building digital animations, students engage in critical and creative thinking, build teamwork skills, and learn to try and try again when faced with challenges.

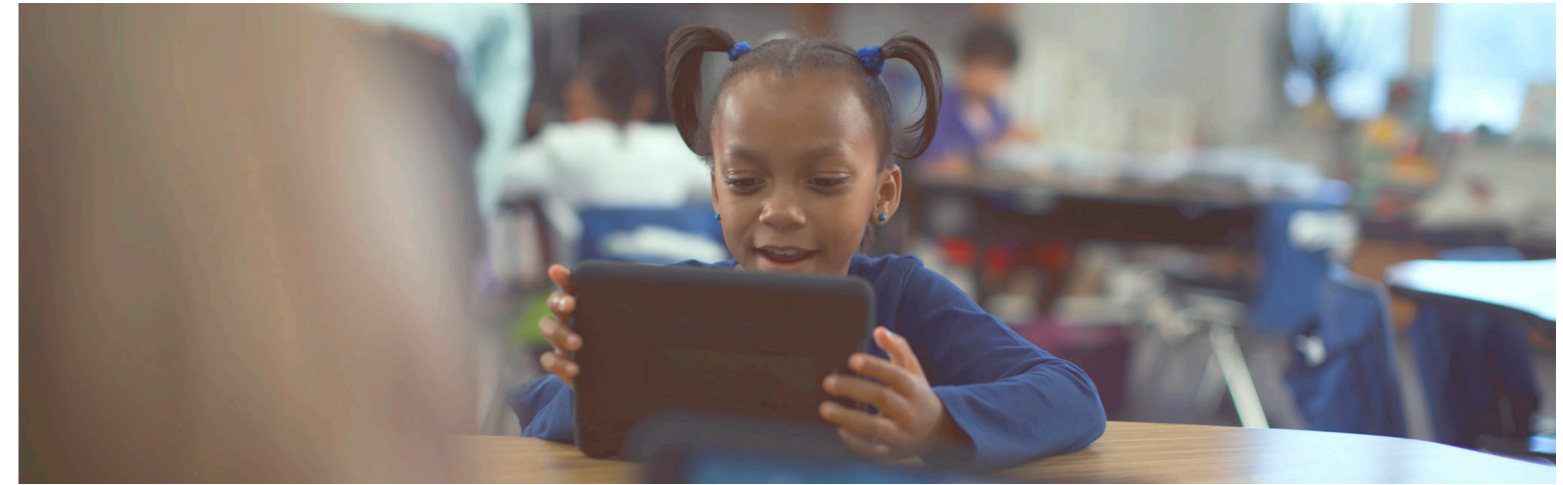
**PLTW Gateway** sparks a joy of discovery and illuminates the range of paths and possibilities students can look forward to in high school and beyond. Tackling challenges like designing tires for a moon rover, cleaning up an oil spill, or solving a medical mystery, students in grades 6-8 learn to test their limits and question what's possible.

**PLTW Computer Science** engages students in grades 9-12 in real-world activities like creating an online art portal or using automation to process and analyze DNA-sequence data. These projects illustrate how intricately computer science is woven into our society, challenge students to think big, and transform students into builders of tech.

**PLTW Engineering** engages students in grades 9-12 in collaborative, real-world activities like working with a client to design a home, programming electronic devices or robotic arms, or exploring algae as a biofuel source. By pushing themselves to rework and refine their projects, students learn that both failed attempts and perseverance are key to learning and innovation.

**PLTW Biomedical Science** students in grades 9-12 step into the roles of medical investigators, surgeons, and biomedical engineers. The program's collaborative, hands-on explorations inspire students to make an impact on the lives of those around them, while preparing them with the know-how and experience to make their ideas a reality.

---





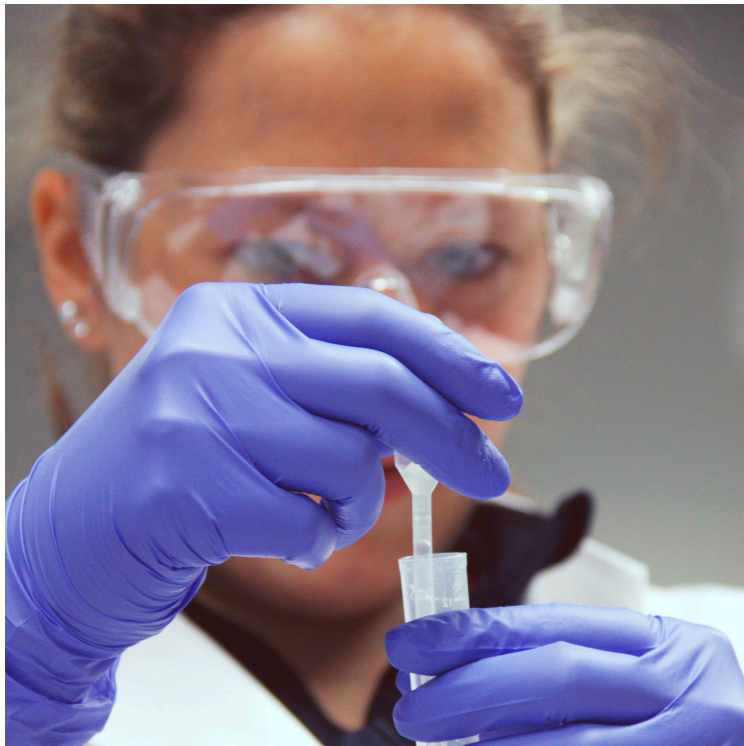
---

## We empower teachers.

---

Teachers play an immeasurable role in empowering students to lead their own learning. We strive to be a trusted partner in this effort. Our goal is to provide teachers with the support and resources they need to **devote more time to inspiring students.**

Through PLTW professional development, teachers learn how to lead the engaging PLTW experience in their classrooms. They learn to facilitate and coach and become comfortable in these roles as their students soar to new heights. Our approach to professional development **infuses a new way of teaching into the classroom.**



---

# We prepare students to make a lasting impact.

---

A few ways PLTW students are making a difference:

- Creating and deploying a water filtration system in developing countries
- Designing and producing prosthetic limbs and accessibility tools for community members with special needs
- Inventing new consumer products and applying for patents
- Proposing solutions for more efficient emergency rooms and hospitals
- Mentoring younger students and sharing a passion for learning
- Interning with local businesses and helping solve real challenges

Just imagine what your students can do.

---

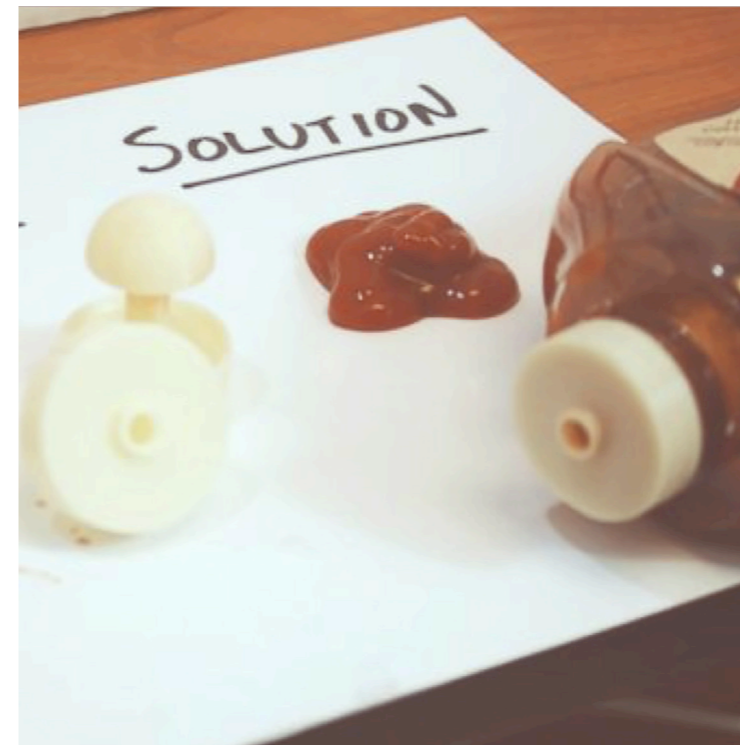


Photo Credit: ABC News



Photo Credit: South Bend Tribune

---

# We build a community of leaders and learners.

---

At the center of everything we do is the student. That's why we bring together an ecosystem of teachers, administrators, college and university educators, parents, and business leaders to engage students in learning and prepare them to seek rewarding careers, solve important challenges, and contribute to global progress.





3939 Priority Way South Drive, Suite 400  
Indianapolis, IN 46240

877.335.PLTW

[pltw.org](http://pltw.org)