

2024-2025  
Student & Parent Handbook

# Thomas Alva Edison Student & Parent Handbook

## TABLE OF CONTENTS

### Contents

To Parents & Guardians .....	6
Edison High School Alma Mater .....	6
School Extension Directory .....	7
School Calendar & Bell Schedule .....	9
About Edison High School .....	10
Principal's Message .....	10
Our Mission .....	11
Our Vision .....	11
About This Handbook & Expectations .....	12
About This Handbook .....	12
Rights of Students .....	12
Student Expectations .....	12
Parent Expectations .....	12
Teacher Expectations .....	12
Counselor Expectations .....	13
Classified Staff Expectations .....	13
Administrator Expectations .....	13
Zero Tolerance .....	13
Closed Campus Policy .....	14
School Policies and Regulations .....	15
Alcohol/Drug Free Policy .....	15
No Smoking Policy .....	15
Conduct in General .....	15
Academic Dishonesty .....	16
Immunizations: "No Shots- No School" Policy .....	17
Electronics / Cell Phone Policy .....	17
ID Cards .....	18
Technology and Internet Use .....	18
Chromebooks .....	18
Safety Drills .....	18
Detention .....	19

# Thomas Alva Edison Student & Parent Handbook

Reflection Center.....	19
Hall Passes.....	19
Dress Code.....	19
Items Not Allowed on Campus for Safety.....	20
Positive Behavior Support.....	22
School Discipline Information.....	23
Specialized School Pathways.....	24
STEM.....	24
Project Lead the Way.....	24
Academic Requirements.....	26
Academic Load.....	28
Tutorials / Viking Learning Center.....	28
Homework.....	28
Authorized Absence.....	28
Student Service.....	29
Honor Roll.....	29
High School Tests.....	29
i-Ready Reading & Math.....	29
CAASPP & Early Assessment Program.....	29
ELPAC.....	30
PFT Physical Fitness Test.....	30
ASVAB (Optional).....	30
Advanced Placement (AP) (Optional).....	30
SAT (Optional).....	30
PSAT (Optional).....	30
ACT (Optional).....	31
How to Calculate Your GPA.....	31
Attendance Rules Procedures.....	32
Absences.....	32
General.....	32
Tardy / Late to Class.....	32
Policy for Leaving Campus.....	33
Off-Campus Lunch.....	33
Making up Work.....	33

# Thomas Alva Edison Student & Parent Handbook

<b>Unexcused:</b> .....	33
<b>Excused:</b> .....	33
Extracurricular Activities & Program Offerings .....	34
Associated Student Body (ASB) .....	34
ASB Finances .....	34
Dances .....	34
Work Permit Policy .....	35
Gym Lockers .....	36
Athletics .....	37
Fall Sports: .....	37
Winter sports: .....	37
Spring Sports:.....	37
Academic Eligibility .....	37
Grade Point Average (GPA).....	38
Freshmen Eligibility .....	38
Post-Freshman Probation .....	38
SJAA Sportsmanship.....	38
DISTRICT POLICY FOR SPORTING EVENTS .....	39
Local Requirement .....	39
50 Credits Rule .....	40
In Line to Graduate Rule .....	40
Parent Involvement & Support Services .....	41
School Site Council (SSC).....	41
English Learner Advisory Committee (ELAC) .....	41
Other Important Information .....	42
Lost and Found.....	42
Telephone / Student Messages .....	42
Use of Restrooms .....	42
Cafeteria / Free Lunches .....	42
Food Deliveries.....	42
Illness and Medicine .....	43
Bus Transportation .....	43
Automobiles on Campus.....	43
Visitor Policy .....	44

# Thomas Alva Edison Student & Parent Handbook

Classroom Visitations: .....	44
Small Children .....	44
Parent Access to Classes and Grades .....	45
Google Classroom .....	45
StudentVUE/ParentVUE .....	45
Health Center .....	46
Campus Map.....	47

# Thomas Alva Edison Student & Parent Handbook

## To Parents & Guardians

This handbook has been prepared to explain and clarify the procedures, policies and regulations at Edison High School. You are urged to contact the assistant principals if you have any questions or concerns. Please note that this handbook is subject to change. Check the Edison website for the most current version of the handbook.

Parents are often reluctant to call the school with information or questions, please be assured that we welcome your involvement and that frequently, the information shared enables us to better meet the needs of our students.

## Edison High School Alma Mater

Edison our Alma mater,  
Give forth thy light, Wisdom and right.  
Wherever we may wander,  
Let us never fail,  
Edison forever,  
Alma mater hail.

## School Extension Directory

<b>ADMINISTRATION ALPHA</b>			<b>HEALTH CENTER/PRE-SCHOOL/HEADSTART</b>	
Justin Gann (E1)	Principal	8009	Health Center 444-8300	8092
Anthony DeAngelo (E2)	12th Grade	8047	Lisa Andrade (Pre-School)	8025
Brandon Duncan (E3)	9th Grade	8012	Rebeca Ortiz (Headstart)	8048
Ambria Alston	11th Grade	8004		
Joshua Munoz (E5)	10th Grade	8008		
<b>SECRETARIES (8100)</b>			<b>STUDENT ACTIVITIES</b>	
			Adriana Anserlian (Activities Director)	82231
			Yearbook	82406
Delia Larkin (Principal's Secretary)		8005	Shelly Walker (Student Data Tech)	8044
Jenalyn Altamira (AP Secretary)		8007		
<b>ADMISSIONS OFFICE</b>			<b>SPECIAL EDUCATION</b>	
			Melissa Coelho (Psychologist)	8039
Jodi Ngonevongsa (Senior Registrar)		8022	Robbie Diestler (Psychologist)	8093
Suzie Wilson (Student Data Tech)		8023	Skylar Edwards (Speech Language Pathologist)	8041
			Learning Center	
<b>ATTENDANCE OFFICE (8101)</b>			Susan Tighe (Department Chair)	
Korina Avelar Diaz		8014		
Joesph Fernandes		8015	<b>OTHER PERSONNEL</b>	
			Maria Garcia (Cafeteria Manager)	8055
<b>GUIDANCE OFFICE ALPHA</b>			JROTC	82092
Monica Madrid	A-CA	8033	Native American Indian Center	8083
Amir Padilla	CE-GL	8016	Yadira Zuniga (Migrant Ed.)	8121
Julio Perez	GO-L	8031	Brenda Scott (Workability)	8029
Justin Nelson	M-PA	8027	Drake Balcao (Independent Studies)	8078
	PE-SI	8013		
Chong Xiong	SM-Z	8080	<b>POLICE / SECURITY</b>	
Laura Pearl	9th A-L	8082	Campus Security (Front Desk)	8085
Joleen Higginbotham	9th M-Z	8032	Reflection Center	82003

## Thomas Alva Edison Student & Parent Handbook


Barbara Greenwood (Guidance Chair)	(10 - 12) AVID	8028	SRO Office	1931
			SUSD Dispatch	2470
<b>CWA</b>			SUSD Police	6911
Estela Martinez (Soc. Services Case Manager)		8019	Stockton Police Department - Emergency	9-911
Eric Hankins		1331		
Brenda Valdivia		1336	<b>CUSTODIAL</b>	
			Gina Izquierdo (Sr Plant Supervisor) (700)	8065
<b>SUCCESS CENTER</b>				
Mayra Beas (Guidance Tech)		8149	<b>FAXES</b>	
Jackie Andrade (Guidance Tech)		8021	Athletics	465-4373
Kris Larkins (Textbook Assistant)		8050	Registration	942-0357
Learning Center		8045		
			<b>OTHER ROOMS</b>	
<b>ATHLETICS</b>			UC Davis Conference Room	8030
Richard Lynch, Athletic Director (E15)		8070	UOP Davis Conference Room	8020




# School Calendar & Bell Schedule

## 4-Period Block Schedule


Below is the Regular Schedule and release time, which is at 3:27 pm. Please note that we will also have one Student Success Day a week (every Thursday) when students are released at 1:09pm. Teachers / staff use this time on Thursday to collaborate in their Professional Learning Communities, ensuring that what we do daily aligns with Edison High School’s Mission, Vision and Student Learner Outcomes.




## REGULAR DAY

 (Mon, Tues, Weds & Fri)

Period/Periodo	Time/Hora
1	8:30 - 10:03
2	10:08 - 11:41
Lunch/Almuerzo	11:41 - 12:11
3	12:16 - 1:49
4	1:54 - 3:27



## STUDENT SUCCESS DAY

 (Thursdays)

Period/Periodo	Time/Hora
1	8:30 - 9:36
2	9:41 - 10:47
3	10:52 - 11:58
4	12:03 - 1:09

## STOCKTON UNIFIED SCHOOL DISTRICT

# 2024-2025

### Instructional Calendar

180-Day Schedule

Dr. Michelle L. Rodriguez  
Superintendent

July 24						
Su	M	Tu	W	Th	F	Sa
1	2	3	4	5	6	
7	8	9	10	11	12	13
14	15	16	17	18	19	20
21	22	23	24	25	26	27
28	29	30	31			

September 24						
Su	M	Tu	W	Th	F	Sa
1	2	3	4	5	6	7
8	9	10	11	12	13	14
15	16	17	18	19	20	21
22	23	24	25	26	27	28
29	30					

November 24						
Su	M	Tu	W	Th	F	Sa
					1	2
3	4	5	6	7	8	9
10	11	12	13	14	15	16
17	18	19	20	21	22	23
24	25	26	27	28	29	30

December 24						
Su	M	Tu	W	Th	F	Sa
1	2	3	4	5	6	7
8	9	10	11	12	13	14
15	16	17	18	19	20	21
22	23	24	25	26	27	28
29	30	31				

January 25						
Su	M	Tu	W	Th	F	Sa
			1	2	3	4
5	6	7	8	9	10	11
12	13	14	15	16	17	18
19	20	21	22	23	24	25
26	27	28	29	30	31	

February 25						
Su	M	Tu	W	Th	F	Sa
						1
2	3	4	5	6	7	8
9	10	11	12	13	14	15
16	17	18	19	20	21	22
23	24	25	26	27	28	

March 25						
Su	M	Tu	W	Th	F	Sa
						1
2	3	4	5	6	7	8
9	10	11	12	13	14	15
16	17	18	19	20	21	22
23	24	25	26	27	28	29
30	31					

April 25						
Su	M	Tu	W	Th	F	Sa
			1	2	3	4
5	6	7	8	9	10	11
12	13	14	15	16	17	18
19	20	21	22	23	24	25
26	27	28	29	30		

May 25						
Su	M	Tu	W	Th	F	Sa
					1	2
3	4	5	6	7	8	9
10	11	12	13	14	15	16
17	18	19	20	21	22	23
24	25	26	27	28	29	30
31						

June 25						
Su	M	Tu	W	Th	F	Sa
1	2	3	4	5	6	7
8	9	10	11	12	13	14
15	16	17	18	19	20	21
22	23	24	25	26	27	28
29	30					

**Board Approved**  
 April 4, 2023

<b>First Day of School</b>	08/01/24	
<b>Last Day of School</b>	05/29/25	
Trimester 1	10/31/24	58 days
Trimester 2	02/21/25	60 days
Trimester 3	05/29/25	62 days
1st Qtr. Ends	10/04/24	44 days
2nd Qtr. Ends	12/20/24	43 days
3rd Qtr. Ends	03/14/25	46 days
4th Qtr. Ends	05/29/25	47 days
P-1 Ends	12/13/24	82 Days
P-2 Ends	03/21/25	134 Days

Instructional Days Per Month	
July	0
August	22
September	18
October	18
November	14
December	15
January	18
February	18
March	16
April	21
May	20
June	0

Fall Break: Oct. 7 - 11  
 Thanksgiving Break: Nov. 25 - 29  
 Winter Break: Dec. 23 - Jan 3  
 Spring Break: Mar. 17 - 21  
 Teacher PD Days: July 29, Sept 19-20, Jan 24

- Regular School Day
- School Break or Vacation
- Holiday
- Teacher Non-Contact Day
- Teacher PD Non-Contact Day

HR/MEA 2.21.24

9

# Thomas Alva Edison Student & Parent Handbook

## About Edison High School

### Principal's Message

Dear Edison High School Community,

Welcome to the 2024-25 school year! As the Principal of Edison High School, I am thrilled to extend a warm welcome to all our students, families, and community members. I hope you had a rejuvenating summer break and are as excited as I am to embark on another incredible academic year filled with opportunities for growth, learning, and success.

Our mission at Edison is to deliver challenging and meaningful instruction within programs that are designed to prepare all students for a variety of post-secondary opportunities. This year, we are placing a strong emphasis on student attendance. Consistent attendance is crucial for academic success, and we are dedicated to working with students and families to ensure every student is present, on time, and ready to learn each day.

We are proud to offer a diverse range of programs designed to inspire and challenge our students:

- **AVID (Advancement Via Individual Determination):** This program continues to prepare students for college readiness and success in a global society.
- **Athletics:** Our sports teams are ready for an exciting year of competition, teamwork, and school spirit.
- **Music and Arts:** From our talented musicians to our creative artists, actors, and actresses, we encourage all students to express themselves and explore their passions.
- **Career Technical Education (CTE):** Providing hands-on experience and skills in various fields to prepare students for successful careers.
- **Dual Enrollment with Delta College:** This program allows students to earn college credits while still in high school, giving them a head start on their higher education journey.
- **Advanced Placement (AP) and Honors Coursework:** Our AP and Honors courses offer students the opportunity for rigorous academic challenges and to further the development of critical thinking skills.

Our dedicated teachers and staff are here to support each student's academic journey, and we encourage all students to take advantage of the resources and opportunities available. Whether you are pursuing excellence in academics, athletics, arts, or any of our specialized programs, your commitment and hard work will pave the way for a successful future.

Together, let's make this school year remarkable. Let's strive for excellence, support one another, and make every day count. I am excited to see the amazing achievements our students will accomplish.

With enthusiasm and pride,



Dr. Justin Gann, Principal

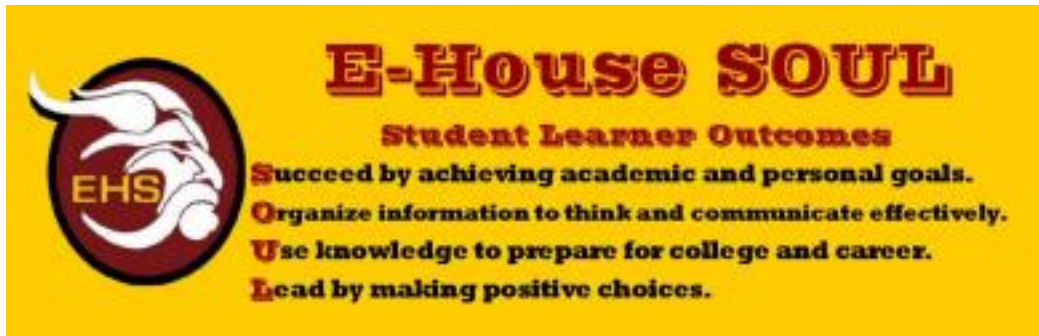
# Thomas Alva Edison Student & Parent Handbook

## Our Mission

Thomas Alva Edison High School will deliver challenging and meaningful instruction within programs that are designed to prepare all students for a variety of post-secondary opportunities.

## Our Vision

Thomas Alva Edison High School will be a locally and nationally renowned learning environment where students, staff, parents, and community members collaborate to ensure all students are college and career ready.



## About This Handbook & Expectations

### About This Handbook

All students are held responsible for knowing and abiding by the regulations in the Student Handbook.

### Rights of Students

Every student has the right to be free from teasing and bullying and have their rights respected. If at any time your rights are interfered with, you should appeal to authority - a CSM, a teacher, a counselor, or an administrator. Appealing to the authorities is the proper thing to do. Do not take matters into your own hands.

### Student Expectations

- Treat yourself/everyone else with respect.
- Be prepared to engage in your education.
- Promote a positive school culture.
- Maintain health & safety guidelines adopted by the district and state, post COVID-19
- Attend and be on time to all classes.
- Respect school and private property.
- Keep your personal belongings with you at all times unless they are in a secure location.

### Parent Expectations

- Treat yourself/everyone else with respect.
- Maintain a positive attitude towards school.
- Talk with your child about what they learn that day at school; ask to see their Focused Notes. Ensure your child has necessary materials to be successful at school and at home.
- Maintain health & safety guidelines adopted by the district and state, post COVID-19
- Attend back to school night and parent teacher conferences to meet with teachers / counselors regarding your child's progress.

### Teacher Expectations

- Treat yourself/everyone else with respect.
- Prepare and deliver rigorous lessons daily.
- Provide ongoing feedback to students & parents regarding progress via Jupiter Grades.
- Have clear and consistent classroom policies and procedures.
- Promote a positive school culture.
- Collaborate with team members.
- Take accurate attendance on a daily basis.

# Thomas Alva Edison Student & Parent Handbook

- Maintain health & safety guidelines adopted by the district and state, post COVID-19.

## Counselor Expectations

- Treat yourself and everyone else with respect.
- Provide truthful/honest feedback regarding student progress.
- Inform students and parents of academic progress toward graduation.
- Schedule meetings, make phone calls, and provide written communication to parents.
- Facilitate crisis intervention.
- Provide intervention for student referrals.
- Provide college, scholarship, and career information.
- Promote a positive school culture.

## Classified Staff Expectations

- Treat yourself and everyone else with respect.
- Be prepared to provide appropriate and timely customer service to students, parents and staff.
- Promote a strong working relationship with staff, students, parents, and the community.
- Promote a positive school culture.

## Administrator Expectations

- Treat yourself and everyone else with respect.
- Set policies and procedures for maintaining an environment for positive student behavior and academic success.
- Provide open communication with parents, students, and staff.
- Hold students accountable for appropriate school behavior and provide due process.
- Be an instructional leader.
- Promote a positive school culture.

## Zero Tolerance

To maintain positive student interaction and ensure the safety of all students at school, we have ZERO TOLERANCE, meaning: Anyone involved in a physical fight / agitation, regardless of who started the fight, as well as anyone who instigated a

## Thomas Alva Edison Student & Parent Handbook

fight or interfered with Staff stopping a fight, will be suspended from school and placed on a “Commitment to Safety Contract”. Violation of this contract can result in a student being expelled from Edison High School.

### Closed Campus Policy

Edison High School is a closed campus by district ruling. A “Permit to Leave” must be obtained from school personnel before a student leaves campus.

## School Policies and Regulations

### Alcohol/Drug Free Policy

Ed Code 48900 (c)(d)

It is strictly prohibited for students to use, possess, distribute, sell, or be under the influence of alcohol, illegal drugs, and/or any controlled substances, on any district premise or function (home or away). The minimum penalty for violation of this policy will be suspension from school; however, violation of this policy may result in permanent expulsion from school and/or arrest.

### No Smoking Policy

Ed Code 48900(h), 48901

SUSD has a no smoking policy (including e-cigarettes and VAPE pens). Individuals (students and staff) are not allowed to smoke or have tobacco in their possession on campus or during school and sponsored activities. This refers to all school activities, athletic events, field trips, etc. (home or away).

### Conduct in General

Not all acts of misconduct can be itemized in this regulation. The following is a list of some of the main areas of conduct which may lead to disciplinary action such as: detention, confiscation of material, being placed on the No-Go list, revoking privileges (including participation in student activities, sporting activities, off campus lunch, dances, proms, and ceremonies), revoking of Specialized Program Status (ex: AVID, STEM awards, and sashes), alternative schedule, probation, exclusion, arrest, mandatory program reassignment, suspension and/or expulsion.

- A. Use of abuse, violence, force, noise, coercion, intimidation, fear, insubordination, or other similar conduct in a manner which constitutes an interference with school purposes or violates another's human rights
- B. False

# Thomas Alva Edison Student & Parent Handbook

- communication of the presence of a bomb or explosive
- C. The willful causing or attempting to cause damage to personal or school property
  - D. Stealing, attempting to steal or receiving stolen personal or school property
  - E. Causing or attempting to cause (including instigation) physical injury to oneself or others
  - F. Threatening or intimidating any person for the purpose of, or with the intent of, obtaining money or anything of value from such person
  - G. Knowingly possessing, handling or transmitting any object or material that is ordinarily or generally considered to be a weapon or dangerous object
  - H. Engaging in the unlawful selling, using, possessing, and/or being under the influence of or distribution of alcoholic beverages, narcotics, drugs or other controlled substances
  - I. Truancy or failure to attend assigned classes or activities
  - J. Using language which by school standards is considered obscene, vulgar, profane, threatening or intimidating
  - K. Defiance of or Disrespect to authority including directives by CSM, Staff, and Police
  - L. Graffiti, gambling (including dice games whether or not money is visible as a transaction), vandalizing and littering on school grounds.
- \*Edison defines participation in categories A-L as being a spectator to or participating in the event. This means that spectators will also be disciplined as they are contributing in creating an unsafe environment.

## Academic Dishonesty

Including but not limited to receiving, discussing, using, or distributing test information; submitting work which is not entirely the student's original work, submitting purposefully corrupt files; receiving information in any means, of any kind, during a test; falsifying information to a staff member where the student's grade or peer's grade benefits.

Consequences for Academic Dishonesty may include: being placed on the No-go list, revoking privileges (including participation in student activities, sporting activities, off campus lunch, dances, prom, and ceremonies), revoking of Specialized Program Status (For example: AVID, STEM awards, chords, etc.), alternative schedule, probation, exclusion, arrest, mandatory program reassignment, suspension and/or expulsion, no retest, a zero grade for the assignment, no grade bump for AP courses or removal from the program.



# Thomas Alva Edison Student & Parent Handbook

## Immunizations: “No Shots- No School” Policy

The high school health center is required by state law to examine and update incoming students’ immunizations records. Students must have an up-to- date immunization record. If records are not up-to-date, students will not be allowed to register. Any questions regarding immunization records may be directed to the health center (209) 444-8300. All students entering the 7th-12th grade year must have proof of a Pertussis (whooping cough) booster shot, known as TDAP, before starting school. The Pertussis requirement will be met by having your child receive one dose of Pertussis vaccine on or after his or her 10th birthday.

## Electronics / Cell Phone Policy

Ed. Code 48901.7

Cell phones are prohibited in classrooms by CA Ed Code. Cellular phones should be powered down and out of site during class (placed in backpack, pocket,etc.). Students may only use cell phones in the classroom/during class according to teacher directives. This policy also applies to earbuds/Air Pods, etc. Student noncompliance will result in...

**1st offense:** Student shall receive a warning from the teacher that their phone may be confiscated.

**2nd offense:** Student shall receive a second warning from the teacher. Teacher will call home to notify parents/guardians of infraction.

**3rd offense:** Student will be escorted by a Campus Security Monitor to their grade level admin, and their phone may be confiscated for the student to retrieve at the end of the school day.

**Defiance:** Students who refuse to put cell phones away will be escorted by a Campus Security Monitor to their grade level admin, and their phone may be confiscated for the student to retrieve at the end of the school day.

Further infractions will result in administrative response (SST/parent conference).

**\* Edison is not responsible for lost/stolen electronics and will not assist in the recovery of these items. A police report may be filed. Students who bring their own devices to school are subject to a reasonable search if suspicion arises that the device contains evidence of a violation of school policy/law.**

# Thomas Alva Edison Student & Parent Handbook

## ID Cards

To promote safety, it is mandatory for all students to possess a current ID card. ID cards will be required for the following:

- To check out school books
- To use as a student body ID card / Internet ID
- For other identification purposes
- For entrance into ALL school sponsored events or activities

If an ID card is lost, a replacement card must be purchased for \$5.00 from the student store.

## Technology and Internet Use

Edison High School is a Digital High School. As a result, the school has various computer laboratories and classrooms with Internet access. Individuals using Edison's technology assume responsibility for its appropriate use. All terms and conditions as stated in this document are applicable to any user accessing the Internet through any resources provided by Edison HS. Prior to access, all users must sign the Acceptable Use Policy and agree to abide by all rules. Internet access is a privilege, not a right, and can be revoked at any time.

## Chromebooks

Students at Edison are issued one Chromebook for the duration of their education. It is the student and family responsibility to ensure that these Chromebooks are cared for and returned in as good a condition as possible. Students must bring their Chromebooks to and from school on a daily basis as many curriculums and activities are now digital. Student failure to bring charged Chromebooks may result in the student falling behind and not meeting state learning standards. Should a technical issue arise, it is the student's responsibility to notify the appropriate staff on site.

## Safety Drills

To better prepare for real emergencies, safety drills will be held periodically throughout the school year. Safety procedures have been implemented and will be reviewed periodically with students and staff. Any student interfering with safety drills is subject to suspension and/or expulsion.

# Thomas Alva Edison Student & Parent Handbook

## Detention

After school detention will be assigned by school staff as a consequence for violation of school policies. Detention may be served before school if available. Failure to serve detention may result in additional detention time, up to 30 minutes, as well as restriction from campus activities (dances, sporting events, performances, etc.). The use of cell phones will not be permitted during detention. Detentions can be checked through the Hero App.

## Reflection Center

Administration may assign students to the Reflection Center for the following reasons:

1. Teacher referral or Teacher initiated class suspension (maximum 2 days). Teachers must have attempted in-class interventions with documentation and hold a parent conference prior to out-of-class referral\*.
2. Any violation of school policies.

\*Except in cases of emergency or extraordinary circumstances.

## Hall Passes

Quality instruction is the top priority at Edison High School. Therefore, hall passes will only be given at the teacher's discretion after the first 15 minutes of class and before the last 15 minutes of class. Students leaving class must have the permission from the adult supervisor of the class and must have the appropriate pass or vest.

## Dress Code

(Ed. Code Section 35294.1)

The following dress code applies to all students and community members attending events at the school site.

Students dressed inappropriately may be offered school attire or be sent home. For the safety of students and staff at Edison High School as well as to promote a positive school culture, the following policies have been implemented:

- No red or blue clothing of any kind or amount may be worn at school. The ban includes lettering, clothing trim, shoe laces, belts, etc. Students who wear banned clothing will face discipline. (Blue Jeans are acceptable.)
- Clothing that promotes drugs or tobacco (such as Cookies and Backwoods) alcohol, or sexual content are prohibited.

# Thomas Alva Edison Student & Parent Handbook

- Edison baseball caps, beanies, and religious/ethnic attire are the only headgear permitted on campus.
- Only Edison athletic apparel is permitted. Other professional sports apparel is prohibited.
- Clothing and backpacks that contain graffiti will not be permitted.
- See-Through Clothing is prohibited
- Short shorts, ripped pants that show the upper thigh, or any other clothing that exposes private body parts are prohibited
- Clothing that exposes body parts between the shoulder and mid-thigh are prohibited

Edison High School reserves the right to prohibit such apparel that causes distractions or disturbances to the instructional program of the school or interferes with the learning process. Decisions regarding the appropriateness of clothing will be at the discretion of the administration.



## Items Not Allowed on Campus for Safety

## Thomas Alva Edison Student & Parent Handbook

- Electronic Gaming Devices
- Spiked Jewelry
- Bandanas
- Laser Pointers
- Skateboards
- Spray paint
- Weapons or Dangerous Objects
- Permanent Markers
- Drug/Alcohol related items
- Dice
- Tobacco Products/Matches/Lighters
- Chains of any kind
- Liquid Correction Fluid
- Any alteration from the original on any article of clothing i.e.: Old English Lettering
- Head Coverings of any kind (except approved Edison gear or ethnic/religious headwear)
- Clothing articles promoting or displaying drug, alcohol, tobacco and or inappropriate language, pictures or behavior
- Red or Blue clothing of any kind or amount (blue jeans are acceptable)
- Ski Masks

None of these items are allowed on campus and will be confiscated, with the appropriate disciplinary measures being taken.

## Positive Behavior Support

At Edison, students, teachers, and staff are expected to engage in Positive Behavior Interventions and Support systems (PBIS). Vikings are expected to be Safe, Responsible and Respectful as well as show their SOUL on campus. Students who demonstrate positive behaviors may be rewarded with Viking Points through the HERO app.

Viking points can be used to buy-out detentions, for raffles and other rewards on campus.

**Soul Vikings**

**RESPECTFUL RESPONSIBLE SAFE**

**CLASSROOM**

*Respectful Safe Responsible*

**THINK** before you act (pret to be "Yes, Helpful, Inspiring, Necessary, & Kind")

Be mindful of culture, ethnicity, gender, religion, and physical, mental, linguistic, and other differences.

Use professional language and behavior.

Honor each other's opinions.

Keep our class safe & free from drugs, alcohol, violence, bullying and discrimination.

If you see something, say something, do the RIGHT thing.

Follow classroom norms.

Take emergency situations seriously.

Be in class on time & prepared to work.

Take responsibility for your actions, own what you do & own what you say.

Actively participate & stay on task.

Treat each other's & the school's property responsibly.

Use technology & cell phones for academic use.

**SCHOOL & COMMUNITY**

*Respectful Safe Responsible*

**THINK** before you act (pret to be "Yes, Helpful, Inspiring, Necessary, & Kind")

Represent Vikings positively.

Respect people's property & privacy.

Be mindful when passing learning environments.

Honor each other's opinions.

Use appropriate language.

Be still and kind.

Keep our school safe & free from drugs, alcohol, violence, bullying and discrimination.

Wear your vest/hall pass during class time.

If you see something say something.

Keep to the right of walkways.

Report unsafe conditions or accidents immediately.

Be attentive to your surroundings.

Keep your hands to yourself.

Close up after yourself.

Take care of restroom needs in a timely manner.

Keep hands to yourself.

**TECHNOLOGY**

*Respectful Safe Responsible*

**THINK** before you act (pret to be "Yes, Helpful, Inspiring, Necessary, & Kind")

Protect your privacy and the privacy of others.

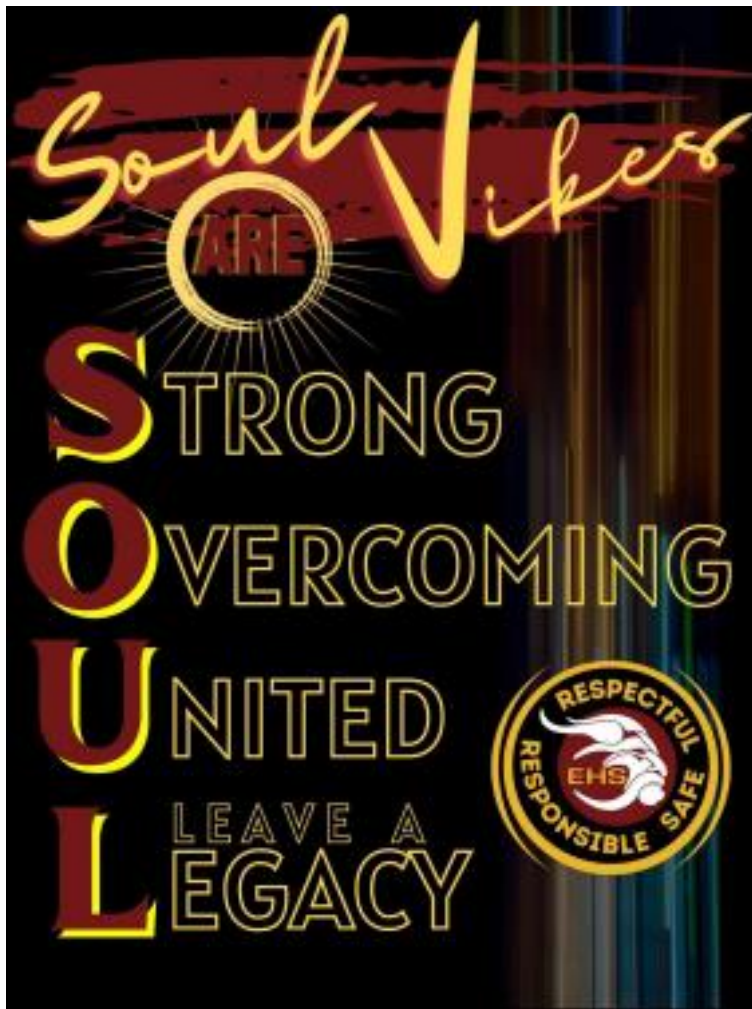
Keep our school safe & free from electronic bullying and all other forms of bullying.

Report cyberbullying.

Use technology productively, on intended.

Save all of your passwords & keep them private.

Reserve electronic devices for educational use.



## School Discipline Information

**Detention:** 30 minute after-school detention to be served in the reflection center. Detention status can be checked through the HERO app.

**Reflection Center:** Students sent to the Reflection Center may participate in restorative & reflective activities.

**Referrals:** Health Center referrals may include Tobacco Use Prevention Education (TUPE) and mental health services such as anger management and group counseling.

**NO-GO List:** Students will be prohibited from participating in ALL extracurricular activities including attending or playing in athletic events, sports practices/games, dances, rallies, clubs etc. Status can be checked through the HERO app.

**Contracts:** Agreements between students, parents, counselors or admin to correct and monitor student behavior. **Out-of-School Suspension:** Students must remain 1,000 feet away from campus during a suspension between 1 and 5 days depending on the severity of the infraction.

## Specialized School Pathways

### STEM

#### Mission

Students in Edison's STEM program participate in a rigorous math, science, and technology program that emphasizes the preparation for and acceptance to a four-year post-secondary educational institution.

Students participate in activities and projects involving inquiry, research, and problem solving through critical thinking. At the completion of our program, students will be prepared for a four-year post-secondary educational institution.

The Edison STEM Program is unique in that it offers the highest level of mathematics and science classes available to high school students including: AP Calculus AB & BC, Anatomy & Physiology, and Physics (not all courses are offered each year).

#### STEM Courses

**MESA:** Students develop their math and science skills through academic, activity-based labs. Students demonstrate appropriate study techniques and improve their reading and writing skills through interdisciplinary activities. The activity-based curriculum enhances students' confidence, team spirit and academic excellence. Students participate in college visitations, local and state competitions, and field trips.

**Anatomy & Physiology:** Students demonstrate an understanding of the structures of the body as a whole and the functioning of its chemical and physical systems. Students interested in health sciences can benefit from the development of the technical skills & language that are a part of this course.

Students participate in laboratory exercises and use technical language in preparing laboratory reports.

### Project Lead the Way

#### Engineering

- **IED:** Students dig deep into the engineering design process, applying math, science, and engineering standards to hands-on projects. They work individually and in teams designing solutions to a variety of problems using 3-D modeling software.
- **POE:** Students explore a broad range of engineering topics, including mechanisms, the strength of structures and materials, and automation. Students develop skills in problem solving, research, and design while learning strategies for design process, documentation, collaboration and presentation.
- **CIM:** Students discover and explore manufacturing processes, product design, robotics, and



# Thomas Alva Edison Student & Parent Handbook

automation, and then they apply what they have learned to design solutions for real-world manufacturing problems. • Computer Science

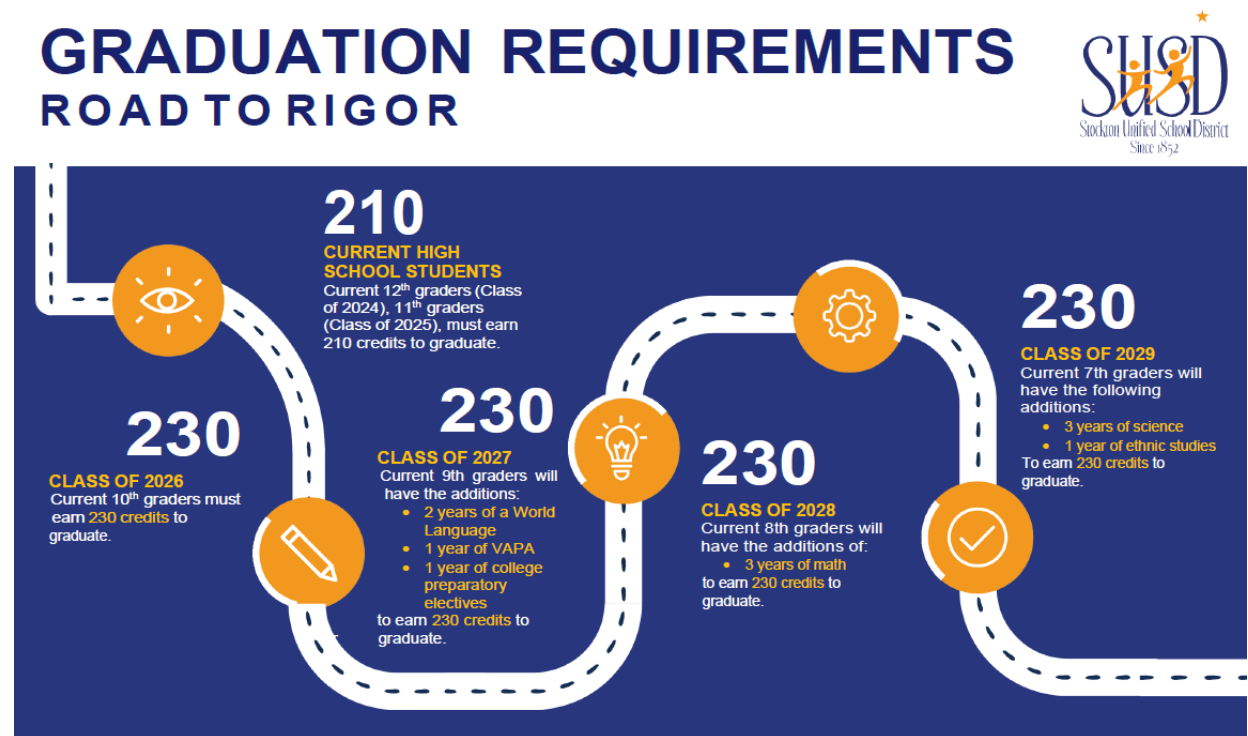
- CSE: Students experience major topics, big ideas, and computational thinking practices used by computing professionals to solve problems and create value for others. Course empowers students to develop computational thinking skills while building confidence, preparing them for CSP and CSA.
- CSP: Using Python® as a primary tool, students explore and become inspired by career paths that utilize computing, discover tools that foster creativity and collaboration. Course is College Board endorsed, giving students the opportunity to take the AP CSP exam for college credit.
- CSA: Students collaborate to create solutions to problems by designing / implementing user interfaces & Web-based databases, as well as creating games or apps to serve a need in the community. Course aligned to AP CSA.

## Academic Requirements

Students must successfully complete the minimum subjects/credit requirements to earn a diploma:  
Students must earn a minimum of 230 credits for incoming 9th graders.

All students will receive 10 credits for each class they successfully complete.

Distribution of Credit – [CLICK HERE](#)



## Graduation Ceremony Requirements

Edison High School honors its graduating students at the graduation ceremony at the end of the school year. Students identified as potentially not meeting graduation requirements (credit deficient) or with behavior inconsistent with the school conduct code (behavior and / or poor attendance) will not be invited to attend.

Any graduating senior that is suspended for any reason after during the five days leading to graduation or participates in academic dishonesty will not be allowed to participate in the graduation ceremony.

All sashes, chords and stoles to be worn during the ceremony must be approved by ASB and school staff. All graduating Seniors must wear an approved Cap and Gown to the Ceremony. However; no student will be turned away simply for not buying one. Any graduating senior who is unable to purchase a Cap and Gown can see their counselor or our Social Worker and request to borrow one.

**You can go to college**  
**A-G REQUIREMENTS**  
 The University of California (UC) and California State University (CSU) systems require that students complete at least 15 courses in the areas listed below to be considered for admissions. Courses must be completed with a grade of "C" or better. Additional coursework beyond the minimum requirements is strongly recommended.

Requirement	Years Required	Recommended Years
<b>A</b> History/Social Science	2	2
<b>B</b> English	4	4
<b>C</b> Mathematics	3	4
<b>D</b> Laboratory Science	2	3
<b>E</b> Language Other Than English	2	3
<b>F</b> Visual and Performing Arts	1	1
<b>G</b> College Preparatory Electives*	1	1

\*Any courses taken in excess of the minimum required in any subject area may count toward the fulfillment of the College Preparatory Elective requirement.

## Academic Load

### Tutorials / Viking Learning Center

Tutoring services are available every regular day after school. Tutoring sessions are voluntary; however, teachers, administrators, or parents may insist on the student's presence. Tutoring is meant to help students maintain an acceptable level of achievement. Contact the student's counselor for more information.

### Homework

Doing homework results in higher grades. The time and amount of homework should increase with the student's grade level. Incomplete or unfinished class work constitutes homework, which serves to:

- Reinforce the present day's lesson

- Help develop a sense of responsibility
- Prepare for the next day's lesson
- Reinforce acquired skills / develop new ones
- Incorporate available materials/media at home

An allotted time for home study should be part of a student's daily routine, regardless of whether specific assignments have been given. Students should realize that homework is not just written assignments, but studying is an integral part of homework. *All students are required to take in-class notes to reflect the material covered in class to be included in their studies.*

Parents should routinely verify its contents and communicate with teachers if there is a concern, as well as encourage development of good study habits.

### Authorized Absence

Seniors and Juniors may take a three-period schedule as long as the following requirements are met:

- Student on track to graduate with A-G College or Career & Technical education requirements
- The student is in good standing with the school (Good attendance, behavior, and grades).
- The Authorized Absence form is signed by the parent or guardian and returned to the counselor.
- Authorized Absence may be revoked if a student is not on track to graduate, becomes truant, demonstrates non-compliant behavior, or does not exit after their last scheduled period.

- Students with 1st period authorized absence who arrive early will not be permitted on campus until 2<sup>nd</sup> period. Students with 4th period must exit campus regardless of extracurricular activities.

# Thomas Alva Edison Student & Parent Handbook

## Student Service

Seniors can choose to take one period of student service or a teacher's assistant as long as the student has a 2.0 GPA and is on track to graduate.

## Honor Roll

Students who maintain an overall GPA of 3.5 or better are recognized for their achievement by being placed on the Honor Roll.

## High School Tests

### i-Ready Reading & Math

(District Mandated)

i-Ready is an online program for reading and/or mathematics that will help your student's teacher(s) determine your student's needs, personalize their learning, and monitor progress throughout the school year. i-Ready allows your teacher(s) to meet your student exactly where they are and provides data to increase your student's learning gains. i-Ready consists of two parts: Diagnostic and Personalized Instruction.

### CAASPP & Early Assessment Program

(State Mandated for 11th Grade)

Signed into law on October 2, 2013, AB 484 (Bonilla) established the California Assessment of Student Performance and Progress (CAASPP) assessment system. The primary purpose of the CAASPP system is to assist teachers, administrators, and pupils and their parents by promoting high-quality teaching and learning through the use of a variety of assessment approaches and item types. CAASPP scores also serve as the entrance exam for all California Colleges and Community Colleges through the EAP.

The EAP is a partnership between the California State University system, the California Department of Education, and California high school districts. The EAP measures college readiness in English and math through the CAASPP and CAST testing systems. Students' scores on CAASPP are used to assist students in Self Placement in English and math at CSU and participating community colleges. A further benefit of the program is that it allows students to prepare for college level English and math courses while still in high school.

# Thomas Alva Edison Student & Parent Handbook

## ELPAC

(State Mandated for ALL English Learners)

English Language Proficiency Assessment of California has three purposes: identify students who are limited English proficient, determine the level of English language proficiency of students who are limited English proficient, assess the progress of limited English proficient students in acquiring the skills of listening, reading, speaking, and writing in English.

## PFT Physical Fitness Test

(State Mandated for 9th Grade)

The PFT provides information that can be used by (1) students to assess and plan personal fitness programs; (2) teachers to design the curriculum for physical education programs; and (3) parents and guardians to understand their children's fitness levels.

## ASVAB (Optional)

A multiple aptitude test offered free by the DOD to estimate students' performance in five occupational areas. Results aid counselors in students' career planning. (Note: Military will not contact any student unless requested by the student)

## Advanced Placement (AP) (Optional)

A series of tests in college-prep content areas given each Spring to students in AP courses. Successful completion of each test may result in college credit for the content area of the test (depending on the college's policy).

## SAT (Optional)

A college admissions placement test used by most four-year colleges. Students take the SAT their junior year and can retake it during their senior year.

## PSAT (Optional)

A standardized test that provides first hand practice for the SAT Reasoning Test. It also gives you a chance to enter National Merit Scholarship Corporation (NMSC) programs.

# Thomas Alva Edison Student & Parent Handbook

## ACT (Optional)

A college admissions placement test used by most four-year colleges. This test incorporates reading, writing, math, science, and English. The ACT is designed to assess high school students' general educational development and their ability to complete college-level work.

## How to Calculate Your GPA

1. Use the current semester final grades.
2. Multiply attempted credits by points = total column.
3. Point System: A=4, B=3, C=2, D=1, F=0
4. Add attempted credits and total columns separately
5. Divide total earned by number of attempted credits. This gives the GPA.

Course	Final Grade	Credits	Points Total
PE	A	5	4 20
Algebra 1	B	5	3 15
English 1	B	5	3 15
Biology	C	5	2 10
		3	<b>22</b>
<b>TOTAL</b>		<b>30</b>	
		4	

Steps  
15 2

1
2

Assign points to grades (A=4,  
B=3, C=2, D=1, F=0) Multiply  
Credits by Points  
Total Credits, Total Points  
Divide Points by Credits

## Attendance Rules Procedures

Attendance is a critical part of your child's high school success. This includes arriving at school and being in class on time daily by 8:30 a.m. The following are the school's attendance policies.

### Absences

Excused absences from school will be (1) illness, (2) death in family, (3) doctor appointment. To be classified as an excused absence, all absences must be verified by a telephone call and a note from parents.

For prearranged absences, a prearranged absence form must be obtained. Students must then obtain excusal signatures and request missed work from the teachers of all missed classes 48 hours prior to the event. The form is then returned to the office. All absences which can reasonably be foreseen are to be approved by the use of the "prearranged absence" form.

Absences from school for any reason other than the above mentioned will not be excused by the school. Unexcused absences in semester courses: No credit will be allowed for school work missed during the unexcused absence unless approved by the teacher.

Excessive absence and forfeiture of credit:

Forfeit of credit: A student who, for any reason, is absent - unexcused 14 (fourteen) times per quarter will forfeit credit for the quarter. 4 tardies = 1 unexcused absence.

### General

Students who become ill at school must check out at the Health Center or Attendance Office. Students leaving school for any other acceptable reason must be cleared in advance by the Attendance Office. Any absence not specifically excused by the school will be an unexcused absence. This will include leaving for athletic events or music events in which the student is not a participant. Students participating in regularly sanctioned school activities under the supervision of a school staff member shall not be considered absent from school on their records.

Please contact the Attendance Office at 933-7425 Ext. 8014 or 8015 for any concerns.

### Tardy / Late to Class

Edison follows the district CWA Attendance Improvement policy noting that a 30-minute tardy is equivalent to an unexcused tardy.



# Thomas Alva Edison Student & Parent Handbook

Edison defines 4 tardies = 1 unexcused absence.

In addition to the CWA Attendance Improvement policy interventions, Edison may enforce additional interventions to curb tardiness including but not limited to Detention and loss of privileges.

## Policy for Leaving Campus

Any student leaving campus MUST obtain a permit to leave. Permits will not be issued without parent permission and legal excuse. Students will only be allowed to leave the campus with a legal guardian as identified in school records. Parents/Guardians must provide proper identification when signing a student out of school.

## Off-Campus Lunch

Off-campus Lunch Permit is a privilege and will be revoked if the student does not follow the code of conduct or returns from lunch late more than twice. A student must be academically/socially eligible for an off-campus lunch permit and must complete an application with parent's signature to receive it. If a student comes back late from lunch more than twice, their off-campus privilege may be revoked.

## Making up Work

Work missed because of absences should be made up when the student returns to school. Makeup provisions vary depending upon the type of absence. Teachers are granted discretion in setting deadlines for make-up work within these guidelines:

### **Unexcused:**

Work missed for this reason may be entered as zero credit. If make-up is permitted in any class, the deadline may be set at whatever time the teacher determines is appropriate.

### **Excused:**

It is the responsibility of the student to check with each teacher and arrange for making up missed assignments. A student will have two days after the day he/she returns to hand in make-up work. Prearranged –to be used when students know they will be absent. It is the student's responsibility to inform their teachers of the absence and make arrangements with the teacher for make-up work.

## Extracurricular Activities & Program Offerings

### SUSD Policies and Regulations Governing Student Activities/Participation

Rule 6145 states that a student must have earned 55 credits the previous year, including summer school, to be eligible for participation. Students must maintain a 2.0 GPA or better for the previous semester. There is a one-time probation period allowed regarding the 2.0 GPA, not the 55 credits.

### Associated Student Body (ASB)

The ASB facilitates communication between students, teachers, administration and the Board of Education. Through representatives of classes, organizations and clubs, each student will have a voice in decisions in extra-curricular activities, school policies, social events, student welfare, student conduct and many other factors of school life. ASB serves as a tool to express concern over things which affect the school.

### ASB Finances

ASB finances are the extra-curricular student revenue generated from donations, student payments, student fundraising and/or vending machine/student store sales. Each Advisor must deposit all funds and request payment of all expenditures through the student activities office at least two weeks in advance of the event. All events or fundraisers must receive written approval from student council/school administration before advertising and/or beginning the event. All expenditures must receive a purchase order number before making any purchases. Do not pay any expenses from cash collected.

All necessary forms are found in the student activities office. The ASB accounts are audited by internal and external auditors twice a year. Students checking out fundraising products are responsible for those products. Failure to return money or left over product will result in a student bill. Advisor is responsible for money lost or stolen. Anyone making a payment for personal use items or a donation must obtain a receipt from the staff member requesting the funds.

### Dances

Edison High School students may invite a guest by filling out a guest pass application found in the student activities office and adhering to the dances rules:

1. Any student who has been suspended during the two weeks prior to an Edison dance

# Thomas Alva Edison Student & Parent Handbook

- event will NOT be allowed to attend the dance— this includes ALL dances. That student's name will be placed on a NO GO list for the event.
2. Guests must be registered and approved by the EHS administration in the ASB office at least one week in advance.
  3. All guests must be the ages of 14 (no middle school student) through 19 years old on the date of the dance.
  4. NO EXCEPTIONS!
  5. Students and guests must follow standards expected of EHS students in their dress code, behavior and dancing language.
  6. No smoking, alcoholic beverages or drugs allowed at any school dance.
  7. Good behavior and cooperation with guest and host/hostess is required. Failure to do so will result in both individuals being subject to disciplinary action, including being asked to leave the dance.
  8. Guests/Students will not be admitted without a picture I.D, receipt/ticket and must be accompanied by the host/hostess.
  9. No admission to a dance after 9:00 p.m. NO EXCEPTIONS!
  10. All tickets are non-transferable.
  11. No re-entry privileges.
  12. NO REFUNDS! NO EXCEPTIONS!
  13. Students may be refused entry (despite previous purchase of a ticket) for dress that does not follow the school dress code.

## Work Permit Policy

1. Work permits will only be issued to Edison students who are currently enrolled.
2. Requests for work permits can only be made before and after school with a Guidance Technician in the Administration Building.
3. Students may only request a work permit during non-instructional time.
4. Students must have passing grades to be considered for a work permit.
5. Students must have fewer than 9 unexcused period absences in a quarter to be considered for a work permit.
6. Edison HS reserves the right to revoke any work permit from a student who fails two or more classes or has 9 or more absences during any given quarter.

## Gym Lockers

Gym lockers are provided for students who are enrolled in a PE class free of charge. Lockers are the property of the school and are provided for students' convenience. The school retains the right to access the lockers at all times. Students are not to share or exchange lockers during the school year; therefore, students are responsible for anything that is found in their assigned locker. At no time is the school responsible for any items left in the locker. No personal possessions including backpacks and clothing are to be stored in any gym or weight rooms.

## Athletics

As a member of the California Interscholastic Federation and Tri-City Athletic League, any student who participates in any sport must conform to the eligibility requirements and daily attendance for athletic participation, as well as reside in the school's attendance area and/or have an approved IDA on file. Visit our [website](#) for more information.

### **Interested students must fulfill the criteria below:**

**Student Must Pass a Physical Examination**

Students can take physicals with their own doctor or at the Edison Health Center (209-444-8300). Before any student can participate in any athletic activity, a physical clearance must be on file. They must have all textbooks turned in and not have a bill with SUSU.

Students must sign up with FamilyID

The following sports are offered at Edison High by season:

### Fall Sports:

Cross country, football, girl's golf, boys' soccer, girl's tennis, girls' volleyball;

### Winter sports:

Basketball, girls' soccer, wrestling;

### Spring Sports:

Badminton, baseball, boy's golf, softball, swimming, track, boy's volleyball, and boy's tennis.

## Academic Eligibility

Academic eligibility for all extra-curricular activities within the district can be met by meeting the GPA rule from the previous semesters and either the 50 credits rule from the previous school year (or prior two semesters) or the in-line to graduate rule.

# Thomas Alva Edison Student & Parent Handbook

## Grade Point Average (GPA)

In order to participate in extracurricular activities, at the time the activity begins, students must have an overall GPA of 2.0 or better from the previous semester. Under the GPA rule:

- For fall semester eligibility, grades from Spring semester of the previous school year will be used. Summer school grades will be included with Spring semester grades limited to 10 transferable credits from an accredited institution.
- For spring semester eligibility, grades from Fall semester of the current school year will be used. Summer grades are excluded from GPA.
- A student not meeting GPA requirement can apply for probation under the following terms:

## Freshmen Eligibility

- While incoming freshmen are not required to meet the 50-credit rule, since they haven't earned credits, they must meet the GPA requirement of 2.0 or better.
- Eligibility for Fall semester of freshman year will be determined by grades earned during Spring semester of eighth grade. Summer school grades may be included if Summer school was attended. ● Eligibility for Spring semester of Freshman year will be determined using grades from Fall semester of the current school year. Summer grades are excluded from GPA.
- Each freshman will be allowed to use one semester of probation, which can only be used for either one of the semesters (not both) of his/her freshman year if he/she does not meet the GPA requirement.
- In addition to this initial freshman probation, each freshman is allowed to use one semester of "post-freshman probation", if the "freshman probation" and the "post freshman probation" aren't used in consecutive grading periods.

## Post-Freshman Probation

- Students who do not earn an overall GPA of 2.0 or better for the previous semester have the option to choose a one-time, one-semester probationary period (in addition to freshman probation) for his/her entire high school career at SUSD.
- If a student chooses probation and fails to maintain a GPA of 2.0 or better in any future semester, he / she won't be eligible for extracurricular activity; probation is a one-time, one-semester opportunity. ● Freshman probation and Post-freshman probation cannot be used in consecutive grading periods.

## SJAA Sportsmanship

# Thomas Alva Edison Student & Parent Handbook

Edison has adopted “Victory with Honor”. A good sport is defined as “A person who can take a loss or defeat without complaint, or victory without gloating and who treats his/her opponents and officials with fairness, courtesy, and respect.” It is the intent of the league to eliminate all distractions which might tend to destroy the best values of sport and to stress the importance of fair play. This includes being courteous to officials, visiting teams, and fans.

We must remember to cheer for our team & not berate the visiting team, officials, and fans. It is the policy of SUSD that harassment and violence will not be tolerated under any circumstances. Harassment and violent incidents will be responded to in a manner that effectively deters future incidents. We firmly believe that all persons are to be treated with respect and dignity. SUSD is committed to pursuing “Victory with Honor”, a C.I.F. sponsored program in which our coaching staff make a commitment to developing student athletes of character.

The following behaviors are inappropriate and will not be tolerated at all CIF and SUSD contests: berating your opponent’s school or mascot, berating opposing players, obscene cheers, gestures, or signs, noise makers, or complaining about officials’ calls, taunting, trash-talking, and unsportsmanlike conduct are absolutely.

**EDISON HIGH SCHOOL RESERVES THE RIGHT TO REMOVE ANYONE FROM ANY ATHLETIC EVENT WHO IS UNWILLING TO COMPLY WITH THESE GUIDELINES!**

## DISTRICT POLICY FOR SPORTING EVENTS

No Re-Entry.  
Students must have an ID.  
Only students from participating schools are allowed entry.  
No backpacks.  
No red/blue clothing unless it’s a school color.

### Local Requirement

To meet the local requirements of SUSD, students must meet either the 50 credits rule or the in-line to graduate rule. Entering seniors must have 165 credits minimum (150 credits for Edison High School students) to meet the in-line to graduate rule. The either-or rule is not in effect for entering seniors since they must meet both criteria.

# Thomas Alva Edison Student & Parent Handbook

## 50 Credits Rule

In order to participate in extracurricular activities, at the time the activity begins, a student must have completed (with a passing grade) at least 50 credits in the previous school year or the immediate previous two semesters. Under the 50-credit rule:

For fall eligibility, the student must count the fall and spring semesters of the previous school year and may include summer school at the end of the spring semester.

For spring eligibility, the student must count the preceding fall and the spring semester of the previous school year. He/she may include summer school at the end of the spring semester, if any was taken. Probation cannot be used to circumvent the 50 Credit Rule. A decision based on this rule cannot be appealed.

## In Line to Graduate Rule

To be eligible to participate in extracurricular activities, a student must be in-line to graduate as determined in the beginning of the fall semester of that year.



## Parent Involvement & Support Services

### School Site Council (SSC)

SSC serves as part of the governing body of Edison High School. This council is composed of parents, students, teachers, the Principal and other school staff. Members are elected to represent each sector. Please contact the principal's secretary if interested.

### English Learner Advisory Committee (ELAC)

ELAC is an advisory body of the SSC. The council is composed of parents and staff representatives of either the English Learner and/or Title I programs. Members are elected by their respective parent groups and meet quarterly to discuss and make decisions about the English Learner Program.

## Other Important Information

### Lost and Found

Anyone finding books, backpacks, clothes or other articles is requested to return these articles to the Reflection Center located in the Student Viking Center.

### Telephone / Student Messages

School telephones are to be used for school purposes only during the school day. There are phones in the offices that students may use for emergencies. Messages or deliveries of a non-emergency nature will not be delivered to students.

### Use of Restrooms

Restrooms are located conveniently around campus. It is an expectation that students use the restroom between passing periods or during lunch to minimize the loss of instructional time. During class time, all students must wear a restroom vest outside of class to use the restroom. Students may not gather or loiter in the restrooms. Students have a responsibility to leave the restroom in a neat and orderly manner.

### Cafeteria / Free Lunches

The cafeteria provides meals/snacks before school, during lunch and after school. The cafeteria will provide food services to all students for free or at a reduced price, depending on eligibility. Students must present an ID when prompted to do so by the cafeteria staff in order to receive meals. For more information, contact the cafeteria office.

### Food Deliveries

Food deliveries to students by any business are **NOT ALLOWED**. If a parent wishes to drop off food for their child, they must arrive within five minutes of when lunch begins, park off campus, and walk inside the office, where they must wait for their child to pick up the food during lunch. Food will not be held by staff members so please do not ask them to do so.

# Thomas Alva Edison Student & Parent Handbook

## Illness and Medicine

Administering any medicine to students can only be done by health center staff. Any medicine needing to be administered at school should be done as follows:

1. Written order from a physician detailing the name of the drug, dosage, and time interval medications are to be taken.
2. Written permission from the parent or guardian of the student requesting that the school comply with physician's orders.
3. Medications must be brought to school in a container appropriately labeled by the pharmacy or physician and given to the nurse to be kept in the Health Center.
4. If a student needs an inhaler, they must notify the health center and provide an extra inhaler to be left there in case of an emergency.

## Bus Transportation

The purchase of a bus pass is the sole responsibility of parents and students. Students may be provided with bus transportation if they qualify under district guidelines.

## Automobiles on Campus

All drivers are expected to comply with regulations listed below. These regulations are reasonable and are for the protection of the entire student body.

1. Students must have a valid driver's license and must obtain a parking permit to park in the parking lot.
2. No "hot rodding" near school campus at ANYTIME! NO EXCEPTIONS!
3. Students may not loiter in the parking lot at any time.
4. Students taking part in activities after school must not move their car until activity is over.
5. Students are not to use cars for errands during school time.
6. The Board reserves the right to revoke the above policy or refuse any student the permission to drive.
7. Students are not permitted to drive on campus.
8. The Turnpike parking lot is the only lot available to students.
9. The parking lot is open from 6:30 am to the first bell, then again at the end of the academic school day. If a student needs to leave campus during the day, special permission must be obtained by the administration.

# Thomas Alva Edison Student & Parent Handbook

## Visitor Policy

Uninterrupted quality classroom instruction is a top priority at Edison. For that reason, we do not allow students to bring visitors on campus. People with legitimate business are requested to report to the main office upon entering the building during regular school hours. Visitors must provide a photo ID to obtain a visitor's pass. Trespassers or violators will be cited and arrested in accordance with the law. All visitors must be scanned through Hall Pass, our visitor management system.

## Classroom Visitations:

511.01 (d) "The parents and guardians of pupils enrolled in public schools have the right and should have the opportunity... to participate in the education of their children, as follows:

Within a reasonable period of time following making the request, to observe the classroom or classrooms in which the child is enrolled or for the purpose of selecting the school in which their child will be enrolled in accordance with policies and programs."

For classroom visitations, Edison has defined a reasonable amount of time to be 48 school hours. Visitors are responsible for arranging an agreed upon time with their child's teacher.

## Small Children

Small children are not allowed on campus without permission from the principal. Students who are parents may bring babies or small children to school only if they are enrolled in the Head Start or Preschool programs. The school or any of its staff are not responsible for any injuries that may occur.

## Parent Access to Classes and Grades

### Google Classroom

To check on your students Google Classroom and work load you must be logged into your students Google Classroom. Your student's username is SISnumber@stocktonusd.org and the initial password is set to their birthday as MMDDYYYY.

Step 1:

After logging in, click on a specific class (example classes below).

Step 2:

Look for the section titled “Upcoming” on the left side of the classroom. This area informs students of what work is upcoming or is due soon.

### StudentVUE/ParentVUE

For Student VUE/ParentVUE, visit: <https://www.stocktonusd.net/domain/168>

## Health Center



*Located off of Center Street*



The Edison Health Center has been serving Edison students since 1993. The center is a licensed community clinic and provides a wide variety of services for teens. Students are encouraged to stop by the center to schedule an appointment or call (209) 444-8300 to speak to a staff member who can answer questions and make referrals. The Edison Health Center is located on campus near the tennis courts. The center is staffed by doctors, nurses, health educators, and mental health counselors.

### SERVICES OFFERED

ALL SERVICES ARE FREE AND CONFIDENTIAL

- ✓ SPORTS PHYSICALS
- ✓ GENERAL MEDICAL CARE
- ✓ MENTAL HEALTH COUNSELING
- ✓ FIRST AID
- ✓ SUBSTANCE ABUSE COUNSELING
- ✓ ANGER MANAGEMENT COUNSELING
- ✓ CASE MANAGEMENT
- ✓ HEALTH EDUCATION
- ✓ TEEN PREGNANCY PREVENTION
- ✓ VISION AND HEARING SCREENINGS
- ✓ FLU SHOTS
- ✓ TB TESTS
- ✓ TEEN PARENT SUPPORT
- ✓ LABORATORY/PHARMACY

# Campus Map

