

Ms. Gonzales' Class



April 14th, 2020

Message From The Teacher

Dear Families,

Hope all had a great weekend: spending quality time with SIP family and taking in the joy life has to give us. In these difficult times - family and friend support/love is our best companion.

Please, keep encouraging your child to do their best with the work assigned. Our routines have been altered and it might get frustrating for both students and parents. Keep up the great work.

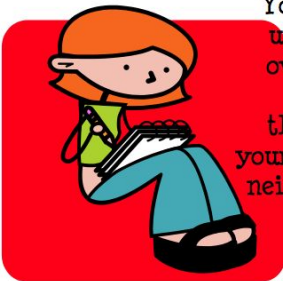
I will keep in touch via Remind and Google Classroom. You can also email me: Reinagonzales@stocktonusd.net

Have a wonderful week!

Important Dates/Reminder

- ✓ April 13th - Holiday, spend time with your SIP family
- ✓ April 17th - "THINK" Question due
 - Post in GC
- ✓ April 24th - UOI Final project due
- ✓ Student Support Services Helpline 209-933-7111
 - Mon.-Fri. 8:00am-3:30pm
- ✓ updates and important information is available on the SUSD website www.stocktonusd.net.

Reflective



You cannot fully understand your own life without knowing and thinking beyond your life, your own neighborhood, and even your own nation.

-Johnnetta Cole

unit of Inquiry

Where We Are In Place and Time

CA HISTORY/NATIVE AMERICANS

Central Idea: Environment shapes culture.

Lines of Inquiry:

- Natural environment and geography
- Natural environment influences resources
- Explorers, Settlers, and Newcomers

Key Concepts:

- Perspective
- Connection
- Form

Distant Learning

Weekly lesson plans will be posted in Google Classroom

- Stream - Announcements
- Classwork - Assignments

Students should work at their own pace to complete weekly assignments.

DON'T forget to "TURN IN" by the end of the week

UOI Native American Inquiry Project
View Guidelines and Rubric located in GC